



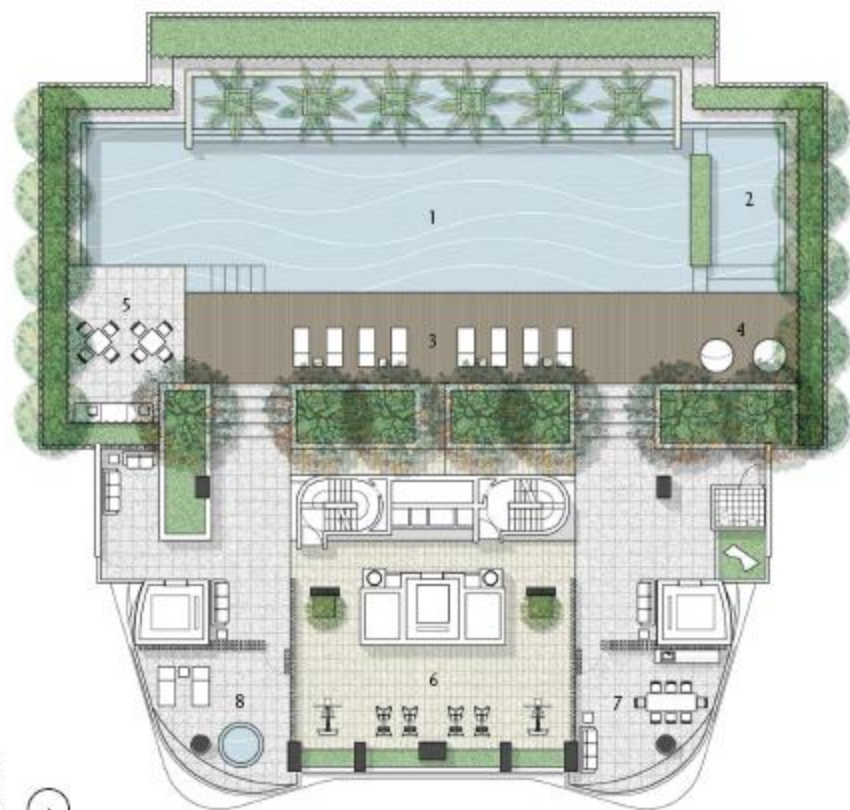
The architecture's fluid curves make a soaring statement of uniqueness.



Discover an oasis of resort-like relaxation at the sky terrace on the fifth storey above the rush of the city. An extension of your private living space where you can indulge in a range of lifestyle pleasures – a dip in the pool, a workout in the open-air gym, unwinding in the spa and jet pool, or hosting parties under the night sky at the dining lounge or the pool deck.



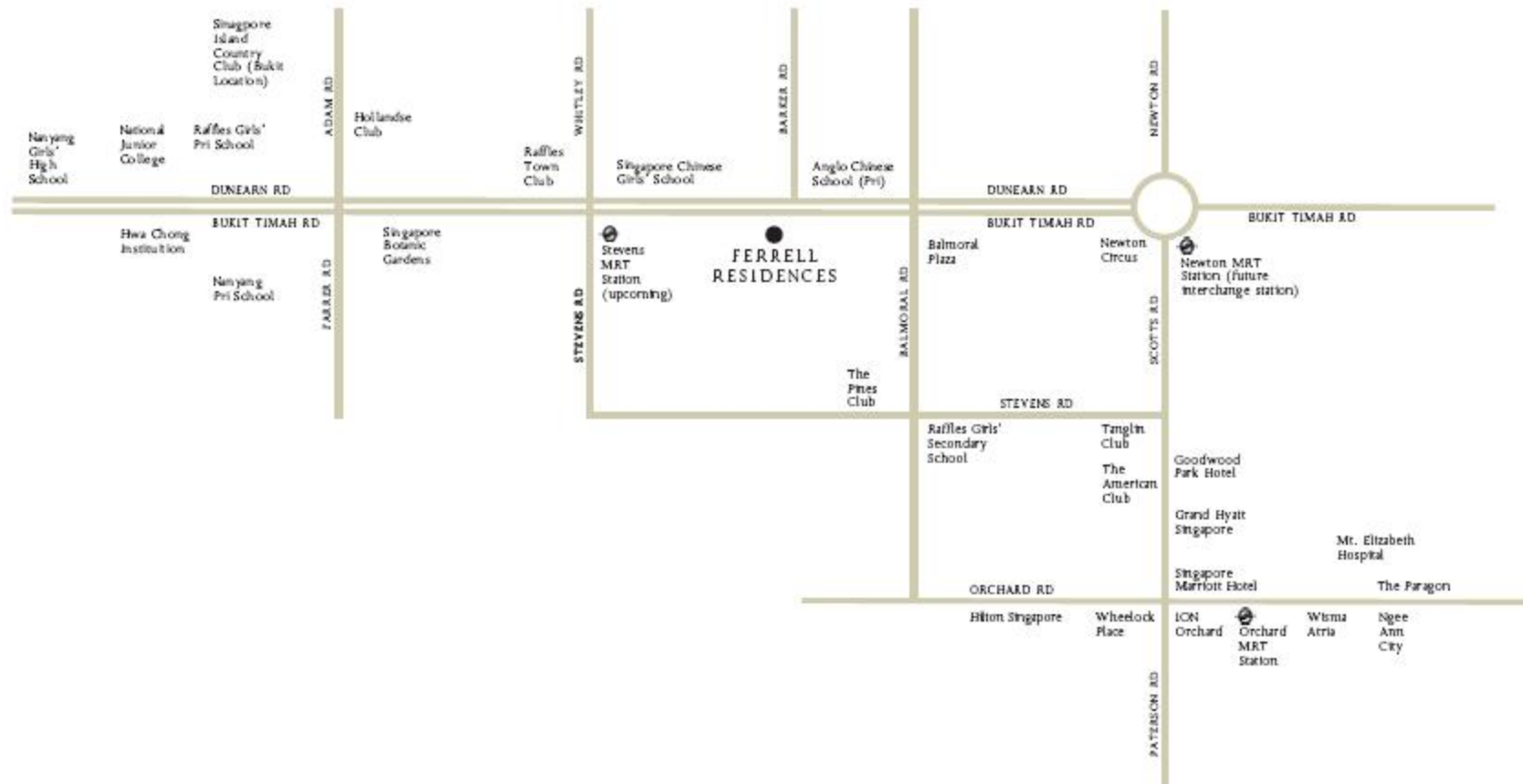
Privacy partners openness in every home. With just two apartments per storey, each apartment is served by a private lift that takes you right to your front door. Inside, the sense of space is luxurious. The open concept living and dining room is the heart of home, expanding onto a wraparound balcony that welcomes in abundant light and air, with exposure to 270-degree views. Bedrooms are comparably large, some with full-height windows on either end to let in more of the outdoors.



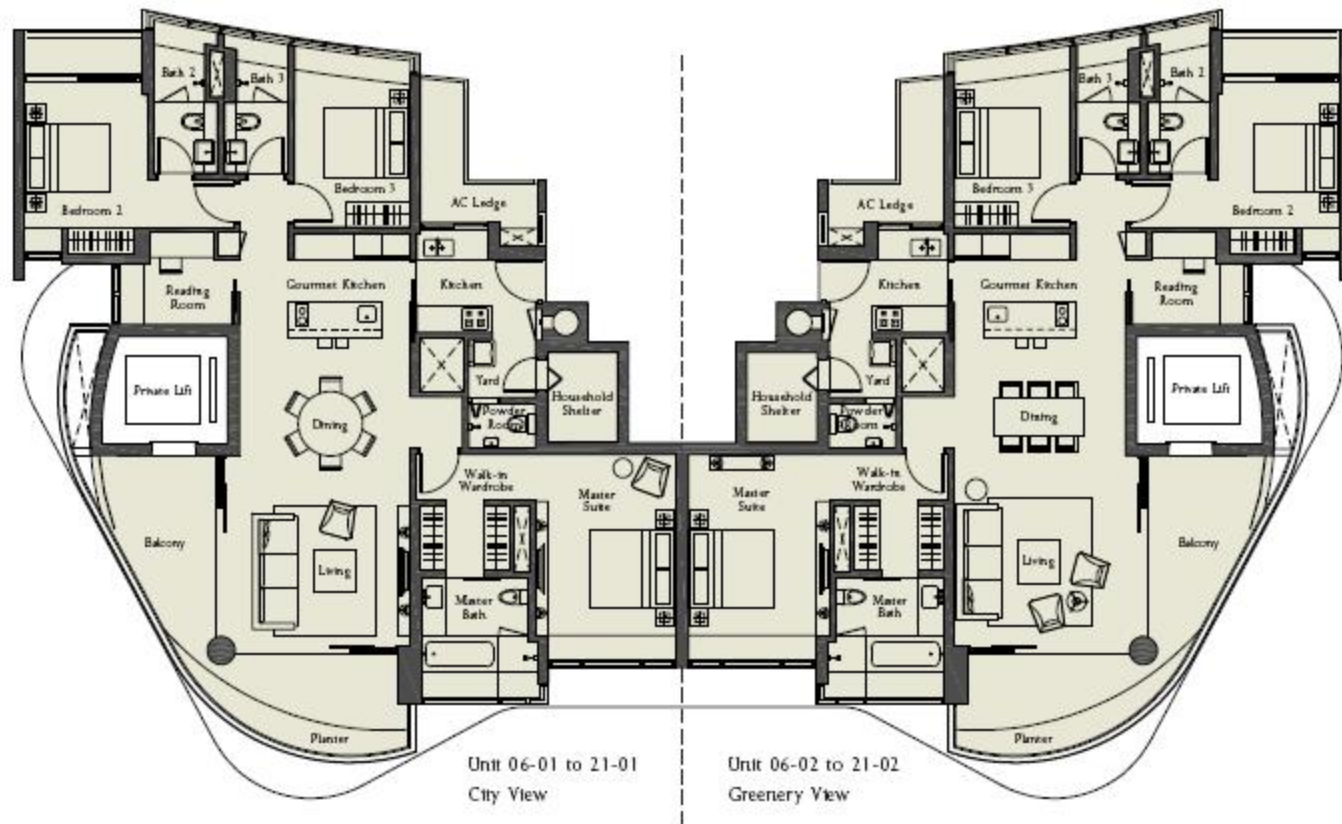
Fifth Storey Plan



- 1. Lap Pool
- 2. Children Pool
- 3. Sun Deck
- 4. Cabanas
- 5. BBQ / Outdoor Dining
- 6. Open Air Gym
- 7. Dining Lounge
- 8. Spa



In this prestigious Bukit Timah neighbourhood, the richness of life revolves around you with restaurants, supermarkets, premier schools and top country clubs. It's also just a few minutes' drive to the main shopping belt of Orchard Road, the Singapore Botanic Gardens and the business district.



Type A | 6th to 21st storey | 171 sq m | 1841 sq ft